

# Fenner



Taper Lock®  
Adaptors

## Taper-Lock® Hubs and Adaptors

02

Fenner Taper-Lock® Weld-on Hubs are easy to install and are entirely suitable for use, where severe operating conditions are met.

Fenner Taper-Lock® Weld-on Hubs are made of steel drilled, tapped and taper-bored to receive standard Taper-Lock® Bushes.

# F Taper-Lock® Hubs and Adaptors

## Taper-Lock® Weld-on Hubs

Fenner Taper-Lock® Weld-on Hubs are made of steel drilled, tapped and taper-bored to receive standard Taper-Lock® Bushes. The extended flange provides a convenient means of welding hubs into fan rotors, steel pulleys, plate sprockets, impellers, agitators and many other devices which must be firmly fastened to the shaft. Fenner Taper-Lock® Weld-on Hubs are easy to install and are entirely suitable for use, where severe operating conditions are met. Tightening the

screws contracts the bore of the bush, thereby locking it to the shaft with the equivalent of a press-fit. This type of construction eliminates mounting difficulties. It also prevents loosening and wear on the hub during operation.

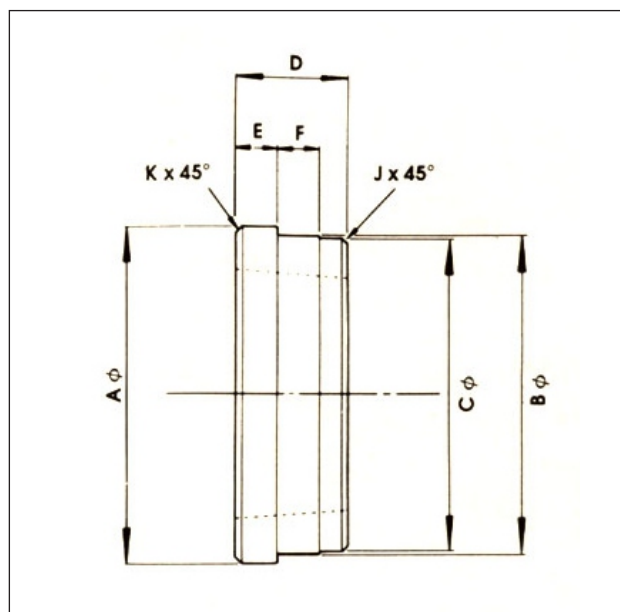
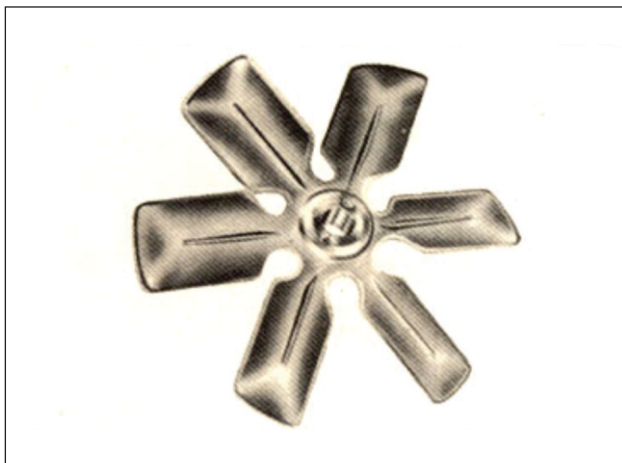


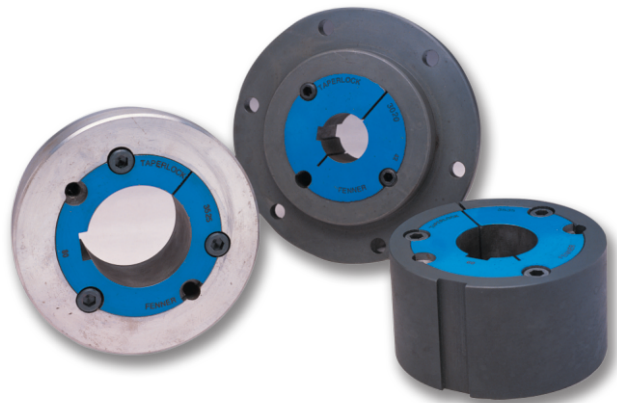
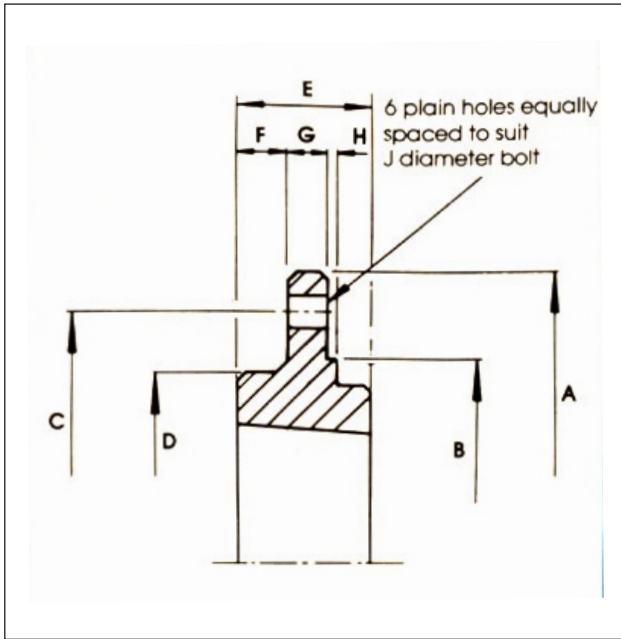
Table: 02-01

Catalogue Code	Size	Use Bush Size	A	B	C	D	E	F	J	K
025C0010	Wh12	1210	70	65.00 64.95	645	25	9	10	1.5	2
025G0010	Wh16	1610	80	75.00 74.95	74.5	25	9	10	1.5	2
025K0010	Wh20	2012	95	90.00 89.95	89.5	32	12	12	1.5	2
025MJ010	Wh25	2517	115	110.00 109.95	109.5	44	19	15	1.5	3
025P0010	Wh30	3020	145	140.00 139.95	139.5	50	20	15	1.5	3
025JX)10	Wh35	3525	190	180.00 179.95	179.5	65	25	25	2.0	4
025S0010	Wh40	4040	200	190.00 189.95	189.5	101	32	30	2.0	4
025T0010	Wh45	4545	210	200.00 199.95	199.5	114	40	30	2.0	4
025U0010	WH50	5050	230	220.00 219.95	219.5	127	40	35	2.0	4

## Taper-Lock® Bolt-on Hubs

Fenner Taper-Lock® Bolt-on Hubs are designed for use with the universally accepted Taper-Lock® Bush.

They provide a convenient means of securing fan rotors, impellers, agitators and other devices which must be fastened firmly to shafts.



**Table: 02-02**

Catalogue Code	Size	Use Bush Size	AΦ	BΦ +0 -0.05	CΦ	DΦ	E	F	G	H	J
017C0020	BF12	1210	120	80	100	83	25	9	7.5	2.5	M6
017G0020	BF16	1610	130	90	110	93	25	9	7.5	2.5	M6
017K0020	BF20	2012	145	115	125	103	32	12	9.5	2.5	M8
017M0020	BF25	2517	185	130	156	122	44	19	12.5	2.5	M10
017P0020	BF30	3020	220	165	190	150	50	19	12.5	2.5	M12

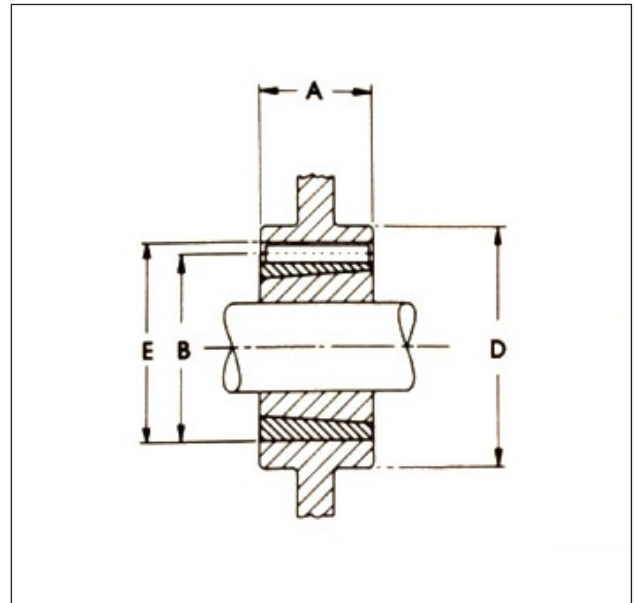
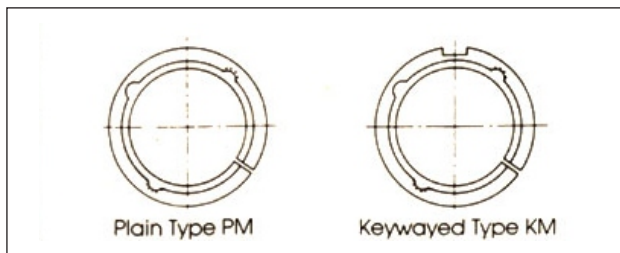
Dimensions in millimetres

# F Taper-Lock® Hubs and Adaptors

## Taper-Lock® Adaptors

Adaptors for Fenner Taper-Lock® Bushes are available for use in parallel bored components, thereby eliminating the need to drill, tap and taper-bore.

Tightening of the Taper-Lock® Bush screws simultaneously contracts the bore of the bush and expands the adaptor in the bore of the hub, resulting in the firmness of a press-fit on all surfaces.



## Metric Adaptors

Catalogue Code	Size	Use Bush Size	A	B*	D Hub dia (Cast Iron)	Key Section	E <sup>†</sup> Depth at hub bore centreline
030A0200	1008PM	1008	22	45	71	-	-
030A0210	1008PM				75	5 x 5	47.66
030C0200	1210PM	1210	25	60	91	-	-
030C0210	1210PM				98	6 x 6	63.66
030G0200	1610PM	1610	25	70	106	-	-
030G0210	1610PM				113	10 x 8	74.16
030H0200	1615PM	1615	38	70	97	-	-
030H0210	1615PM				104	10 x 8	74.16
030M0200	2517PM	2517	45	105	145	-	-
030M0210	2517PM				151	16 x 10	111.16
030Q0200	3030PM	3030	76	130	181	-	-
030Q0210	3030PM				191	20 x 12	137.16
030R0200	3535PM	3535	89	160	225	-	-
030R0210	3535PM				235	22 x 12	162.16
030S0200	4040PM	4040	102	185	275	-	-
030S0210	4040PM				285	24 x 12	191.66

*Dimensions in millimetres*

\* Bore tolerance of B  $\begin{matrix} +0.025 \\ -0.075 \end{matrix}$  is recommended.

Heavy section located may permit use of smaller hub diameter.

† tolerance of E  $\begin{matrix} -0.0 \\ +0.13 \end{matrix}$

Specify Adaptor size when ordering. Plain type (P) will be supplied unless keywayed type (K) is indicated for keywayed type use appropriate keyway in hub key is not supplied. Use of set-screw in hub is not recommended.

For General Reference severe conditions may require larger hub, required hub diameter depends on design and application