



Rotary Gear Pumps
SINCE : 1993

Series : FTSS

Perfect Solution

for Transfer of Corrosive, Hygienic
& Viscous Liquid



All Stainless Steel
www.rotofluidpumps.com
ROTARY GEAR PUMPS



An ISO 9001:2015 Certified Company

Fluid Tech Systems

Ahmedabad - 382 430. (Guj.) INDIA



*“Let Our
Quality Speak
For Itself”*

ADVANCED TECHNOLOGY FOR PUMPING VISCOUS LIQUID



Rotary Gear Pumps
SINCE : 1993

ROTOFLUID® brand Stainless Steel Rotary Gear Pump Model-FTSS are compact, efficient, self-priming, bi-directional positive displacement pump for the transfer of corrosive chemicals, food & cosmetic and other viscous chemicals.

MODEL & PERFORMANCE CHART

| PUMP MODEL | SUCTION & DELIVERY | CAPACITY AT 1440 RPM | | | RECOMMENDED MOTOR HP | | |
|------------|--------------------|----------------------|--------|--------------------|-----------------------------|-----------------------------|------------------------------|
| | | LPM | US GPM | M ³ /hr | Up to 3 kg./cm ² | Up to 7 kg./cm ² | Up to 10 kg./cm ² |
| FTSS - 025 | ¼" X ¼" | 8 | 2.1 | 0.5 | 0.25 | 0.35 | 0.5 |
| FTSS - 040 | ⅜" X ⅜" | 15 | 3.9 | 0.9 | 0.5 | 0.75 | 1.0 |
| FTSS - 050 | ½" X ½" | 25 | 6.6 | 1.5 | 0.5 | 0.75 | 1.0 |
| FTSS - 075 | ¾" X ¾" | 30 | 7.9 | 1.8 | 0.75 | 1.0 | 1.5 |
| FTSS - 100 | 1" X 1" | 50 | 13.2 | 3.0 | 1.0 | 1.5 | 2.0 |
| FTSS - 125 | 1¼" X 1¼" | 100 | 26.4 | 6.0 | 1.5 | 2.0 | 3.0 |
| FTSS - 150 | 1½" X 1½" | 125 | 33.0 | 7.5 | 2.0 | 3.0 | 5.0 |
| FTSS - 200 | 2" X 2" | 200 | 52.8 | 12.0 | 3.0 | 5.0 | 7.5 |
| FTSS - 250 | 2½" X 2½" | 300 | 79.25 | 18.0 | 5.0 | 10.0 | 12.5 |

APPLICATION INDUSTRIES

- Food & Beverages Industry
- Pharmaceutical Industry
- Dyeing & Printing Houses
- Chemical Industry
- Cosmetic Industry

LIQUIDS CAN HANDLE

- All types of Food Products (Clarified Butter/Fruit Pulp/Vegetable Sauce/Vegetable Oil/Animal Oil/Fish Oil)
- Sugar Solution
- Glycerine, Glycol etc
- Cosmetic products (Shampoo/Body Lotion/Baby Oil/Hair Oil/Shower Gel/Soap Solution etc)
- Paints & Resins
- Corrosive Viscous Chemicals

SALIENT FEATURES

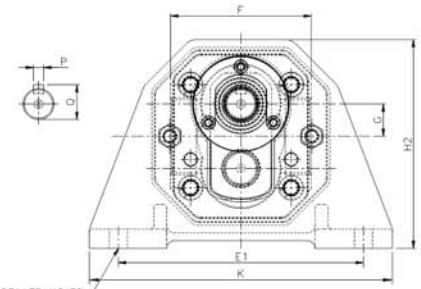
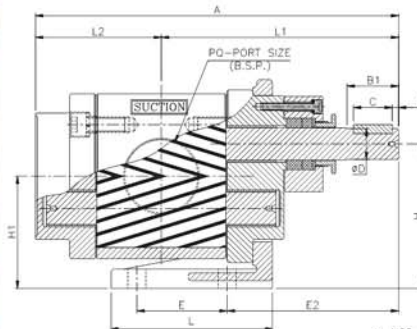
- Self-Priming
- Working Pressure upto 10Bar
- Size from ¼" to 2½" to handle flow from 8 LPM to 300LPM
- Can handle maximum viscosity 25000CST
- Designed to handle fluid at temperature upto 200°C
- Available in flange and foot mounting type.
- The gears and shaft in the pump are nitrided to give longer life & trouble free performance.
- High strength three pieces stainless steel construction in the pump makes its easily cleanable and maintainable.
- The PTFE coated bush in the pump for smooth performance in dry bearing condition.
- Bi-Directional
- Sealing options available – Gland Packing / Single Mechanical Seal / Oil Seal

ACCESSORIES

- Stand and Base Plate
- Product Connecting Flanges
- Motor and Gear Reducers
- Variable Frequency Drives
- Electric Motor Stator
- Couplings

MATERIAL OF CONSTRUCTION

| Parts | Material |
|--------------------|--|
| Body | CF8M – SS-316 |
| Front Cover | CF8M – SS-316 |
| Back Cover | CF8M – SS-316 |
| Gland Cover | CF8M – SS-316 |
| R.H. & L.H Gear | AISI – SS-316 |
| Rotor/Stator Shaft | AISI – SS-316 |
| Bush Bearing | Teflon Coated 'DU' |
| Mounting Bracket | C.I. Grade – 20 IS 210 |
| Sealing | Gland Packing / Oil Seal / Mechanical Seal |
| Packing | Teflon Sheet |
| Key for Coupling | AISI SS-316 |



4 NOS. -ØD1 DRILLED HOLES
• FTSS-025=2 NOS.-ØD1 DRILLED HOLES

DIMENSIONAL DRAWING DETAILS

| PUMP MODEL | OVER ALL | | | | | | | | MOUNTING & SHAFT | | | | | | | | | | APPROX WEIGHT | | | |
|------------|----------|-----|-------|-------|-----|-----|-----|-----|------------------|-----|-----|-----|-----|------|------|----|-----|---|---------------|----|-----|----------|
| | A | F | G | H2 | K | L | L1 | L2 | E | E1 | E2 | H | H1 | D | D1 | C | C1 | P | | Q | B1 | PQ |
| FTSS - 025 | 128 | 60 | 12.5 | 94 | 145 | 60 | 93 | 35 | - | 120 | 88 | 63 | 50 | 11.5 | 8 | 17 | 3 | 4 | 13 | 25 | ¼" | 3.7 kg. |
| FTSS - 040 | 133 | 69 | 14.75 | 104 | 145 | 92 | 96 | 36 | 50 | 120 | 86 | 71 | 56 | 11.5 | 8 | 17 | 3 | 4 | 13 | 25 | ⅜" | 4.5 kg. |
| FTSS - 050 | 146 | 69 | 14.75 | 104 | 145 | 92 | 103 | 43 | 50 | 120 | 86 | 71 | 56 | 11.5 | 8 | 17 | 3 | 4 | 13 | 25 | ½" | 4.7 kg. |
| FTSS - 075 | 159 | 78 | 17 | 126 | 175 | 90 | 114 | 45 | 50 | 140 | 91 | 90 | 72 | 14 | 10.5 | 25 | 3.5 | 5 | 16 | 32 | ¾" | 6.6 kg. |
| FTSS - 100 | 175 | 78 | 17 | 126 | 175 | 90 | 122 | 53 | 50 | 140 | 91 | 90 | 72 | 14 | 10.5 | 25 | 3.5 | 5 | 16 | 32 | 1" | 7 kg. |
| FTSS - 125 | 212 | 96 | 20.5 | 144.5 | 190 | 100 | 144 | 68 | 50 | 153 | 110 | 100 | 80 | 18 | 12 | 30 | 3 | 6 | 20.5 | 38 | 1¼" | 11 kg. |
| FTSS - 150 | 226 | 96 | 20.5 | 144.5 | 190 | 100 | 151 | 75 | 50 | 153 | 110 | 100 | 80 | 18 | 12 | 30 | 3 | 6 | 20.5 | 38 | 1½" | 12.5 kg. |
| FTSS - 200 | 282 | 109 | 25 | 162 | 235 | 125 | 184 | 98 | 70 | 190 | 133 | 112 | 88 | 24 | 14 | 30 | 5 | 8 | 27 | 40 | 2" | 20 kg. |
| FTSS - 250 | 326 | 128 | 30 | 190 | 260 | 150 | 219 | 107 | 85 | 200 | 165 | 132 | 102 | 28 | 16 | 40 | 5 | 8 | 31 | 50 | 2½" | 30 kg. |

* All dimensions are in millimeters. Unless otherwise stated, specifications are subject to change without prior notice as improvements are made from time to time.

Mfgd. by : **An ISO 9001:2015 Certified Company**

Fluid Tech Systems
Ahmedabad - 382 430. (Guj.) INDIA
E-mail : info@rotofluidpumps.com, marketing@rotofluidpumps.com
Website : www.rotofluidpumps.com

Distributor :