

www.rotofluidpumps.com

ROTARY GEAR PUMPS

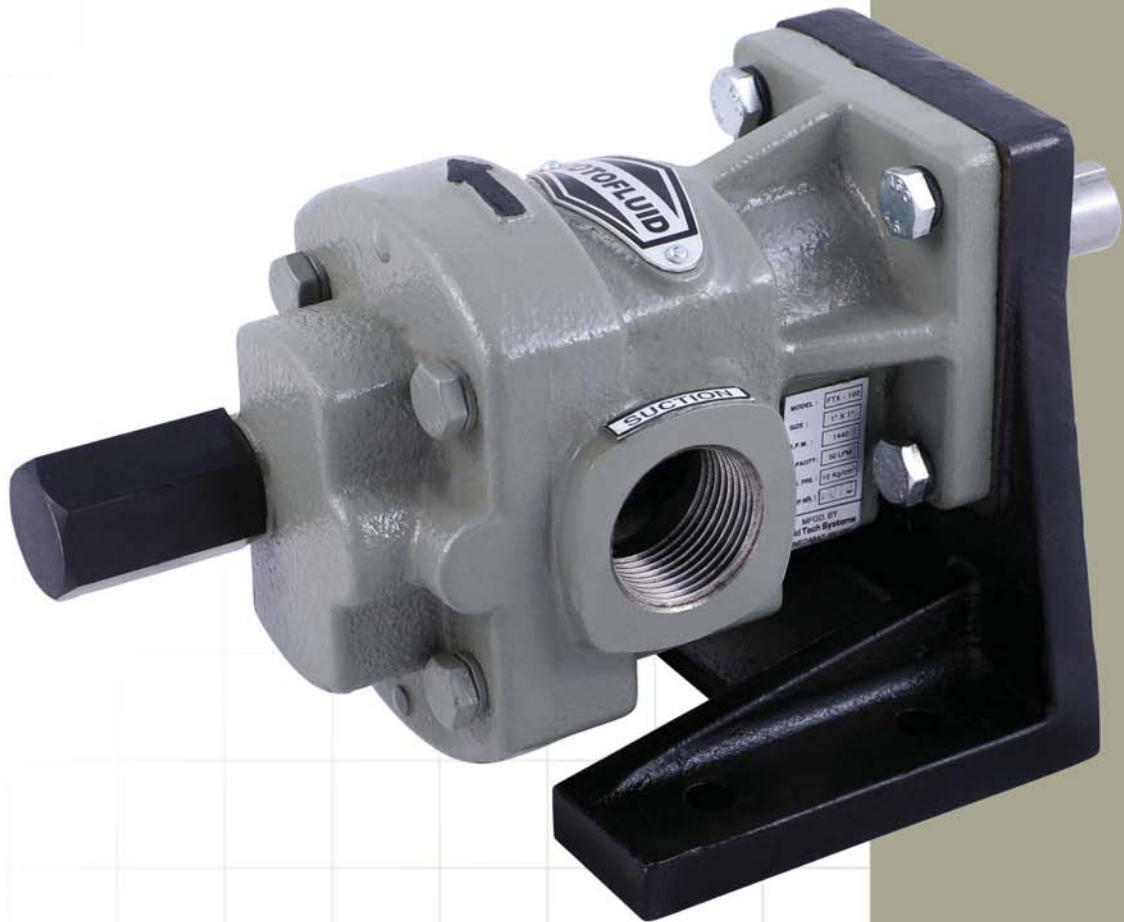
Series : FTX



Rotary Gear Pumps
SINCE : 1993

Perfect Solution

for Transfer of Oil, Viscous &
Semi Viscous Liquid



An ISO 9001:2015 Certified Company

Fluid Tech Systems

Ahmedabad - 382 430. (Guj.) INDIA

NSIC
ISO 9001 : 2008

CE



*“Let Our
Quality Speak
For Itself”*

ADVANCED TECHNOLOGY FOR PUMPING VISCOUS LIQUID



Rotary Gear Pumps
SINCE : 1993

ROTOFLUID® brand Rotary Gear Pump Model FTX are economical, compact, efficient, self-priming, flange cum foot mounted pumps, capable of handling all types of viscous & semi-viscous liquids.

FTX Monoblock pump

Simple and compact designs of monoblock pumps are available in this model. Monoblock version is very easy to portable one to another place and it does not required to align every time when coupled with electric motor. Monoblock version save space and reduces down time.

MODEL & PERFORMANCE CHART

| PUMP MODEL | SUCTION & DELIVERY | CAPACITY AT 1440 RPM | | | RECOMMENDED MOTOR HP | | |
|------------|--------------------|----------------------|--------|--------------------|-----------------------------|-----------------------------|------------------------------|
| | | LPM | US GPM | M ³ /hr | Up to 3 kg./cm ² | Up to 7 kg./cm ² | Up to 10 kg./cm ² |
| FTX - 025 | ¼" X ¼" | 2.5 | 0.66 | 0.15 | 0.25 | 0.35 | 0.5 |
| | | 5 | 1.32 | 0.3 | | | |
| FTX - 050 | ½" X ½" | 10 | 2.64 | 0.6 | 0.5 | 0.75 | 1.0 |
| | | 20 | 5.28 | 1.2 | | | |
| FTX - 075 | ¾" X ¾" | 25 | 6.60 | 1.5 | 0.75 | 1.0 | 1.5 |
| | | 30 | 7.92 | 1.8 | | | |
| FTX- 100 | 1" X 1" | 35 | 9.24 | 2.1 | 1.0 | 1.5 | 2.0 |
| | | 50 | 13.20 | 3.0 | | | |
| FTX - 125 | 1¼" X 1¼" | 75 | 19.81 | 4.5 | 1.5 | 2.0 | 3.0 |
| FTX - 150 | 1½" X 1½" | 110 | 29.05 | 6.6 | 2.0 | 3.0 | 5.0 |
| FTX - 200 | 2" X 2" | 225 | 59.44 | 13.5 | 3.0 | 5.0 | 7.5 |
| FTX - 250 | 2½" X 2½" | 350 | 92.46 | 21.0 | 5.0 | 10.0 | 12.5 |

APPLICATION INDUSTRIES

- Oil & Gas Industry
- Cement Plant
- Power Plant
- Steel Plant
- Paint, Varnish & Ink Industry

LIQUIDS CAN HANDLE

- All types of Oils (Mineral Oil / Vegetable Oil/Fish Oil/Animal Oil/Fuel Oil/Diesel Oil/Furnace Oil)
- Bitumen / Asphalts
- Paints & Varnish
- Sugar Molasses & Syrup
- Glue
- Soap Solution
- Non-Corrosive Viscous Chemicals

ACCESSORIES

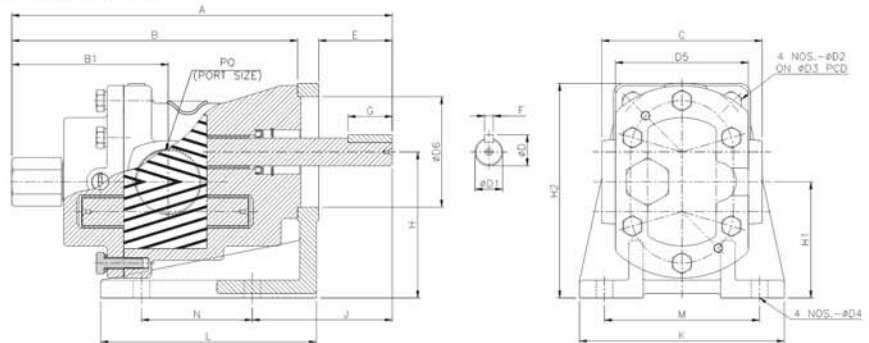
- Stand and Base Frame
- Product Connecting Flanges
- Motor and Gear Reducers
- Variable Frequency Drives
- Motor Stator
- Couplings

Salient Features

- Size from ¼" to 2 ½" to handle flow from 2.5 LPM to 350 LPM
- Designed to handle fluid at temperature 80°C in FTX and 200°C in FTX (HT)
- High strength two pieces Cast Iron construction with single helical strength Alloy Steel Gears & Shaft Sets.
- Gears are shrunk fitted on alloy steel hardened & grounded shaft well supported with the help of 4 nos. of self-lubricated Bronze Bush bearing.
- Sealing options available – Oil Seal / Gland Packing / Single Mechanical Seal
- The relief valve operation can be reversed by changing the back cover on opposite side.
- Can handle maximum viscosity 25000 CST
- Self-Priming
- Working Pressure upto 10Bar

MATERIAL OF CONSTRUCTION

| Parts | FTX up to 80°C | FTX (HT) up to 200°C |
|------------|--------------------------|----------------------|
| Body | IS.210 FG 220 C.I. Grade | |
| Back Cover | IS.210 FG 220 C.I. Grade | |
| Gears | EN - 8 | EN – 353 Nitrided |
| Shaft | EN -19 H.G. | |
| Bushes | Non Ferrous | |
| Seal | Neoprene Oil Seal | Gland Packing |



DIMENSIONAL DRAWING DETAILS

| PUMP MODEL | OVER ALL | | | | | | | | | | | | | MOUNTING & SHAFT | | | | | | | | | | APPROX WEIGHT |
|------------|----------|-----|-----|-----|-------|-----|------|-----|-----|-----|-----|--------|-----|------------------|---|------|-----|------|-----|-----|-----|-----|------------|---------------|
| | A | B | B1 | C | H2 | L | D | ØD1 | ØD2 | ØD3 | ØD4 | SQ. D5 | ØD6 | E | F | G | H | H1 | J | K | M | N | PQ | |
| FTX-025 | 146 | 107 | 63 | 65 | 91.5 | 65 | 10.7 | 9.5 | 6 | 59 | 8 | 55 | 45 | 27.5 | 3 | 18 | 63 | 53.2 | 48 | 80 | 60 | 35 | ¼" B.S.P. | 2.3 kg. |
| FTX-050 | 170 | 127 | 75 | 70 | 102 | 82 | 13.5 | 12 | 7 | 66 | 8 | 60 | 52 | 31.5 | 4 | 22 | 71 | 58.5 | 58 | 94 | 70 | 40 | ½" B.S.P. | 3.2 kg. |
| FTX-075 | 213 | 158 | 93 | 90 | 116.5 | 102 | 16 | 14 | 9 | 75 | 10 | 70 | 60 | 41.5 | 5 | 25 | 80 | 65.2 | 76 | 110 | 85 | 45 | ¾" B.S.P. | 5.5 kg. |
| FTX-100 | 232 | 177 | 102 | 94 | 131 | 108 | 19.5 | 17 | 9 | 83 | 10 | 78 | 68 | 41 | 5 | 27.5 | 90 | 73 | 77 | 120 | 92 | 50 | 1" B.S.P. | 7.5 kg. |
| FTX-125 | 259 | 190 | 110 | 100 | 147 | 135 | 22.5 | 20 | 9 | 95 | 12 | 90 | 75 | 53.5 | 6 | 32 | 100 | 80.5 | 98 | 140 | 105 | 60 | 1¼" B.S.P. | 8.7 kg. |
| FTX-150 | 286 | 208 | 121 | 108 | 164 | 143 | 24.5 | 22 | 9 | 105 | 12 | 100 | 85 | 59 | 6 | 35 | 112 | 90 | 104 | 150 | 115 | 70 | 1½" B.S.P. | 11.8 kg. |
| FTX-200 | 343 | 258 | 141 | 145 | 194 | 195 | 28 | 25 | 13 | 125 | 15 | 120 | 100 | 66.5 | 8 | 40 | 132 | 105 | 126 | 185 | 140 | 100 | 2" B.S.P. | 21.7 kg. |
| FTX-250 | 417 | 302 | 177 | 160 | 230 | 185 | 31 | 28 | 13 | 140 | 15 | 135 | 112 | 91 | 8 | 45 | 160 | 128 | 133 | 220 | 155 | 120 | 2½" B.S.P. | 32.7 kg. |

* All dimensions are in millimeters. Unless otherwise stated, specifications are subject to change without prior notice as improvements are made from time to time.

Mfgd. by :

An ISO 9001:2015 Certified Company



Distributor :