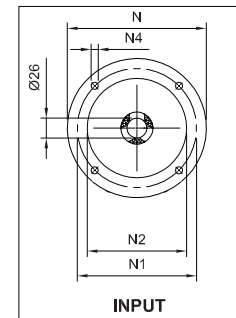
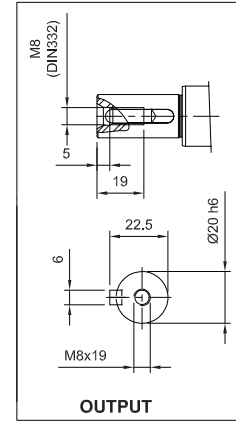
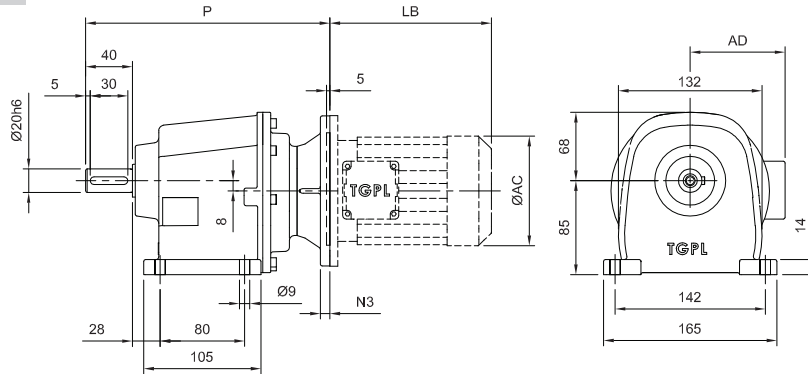


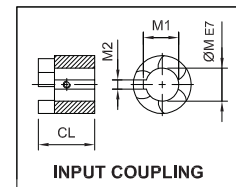
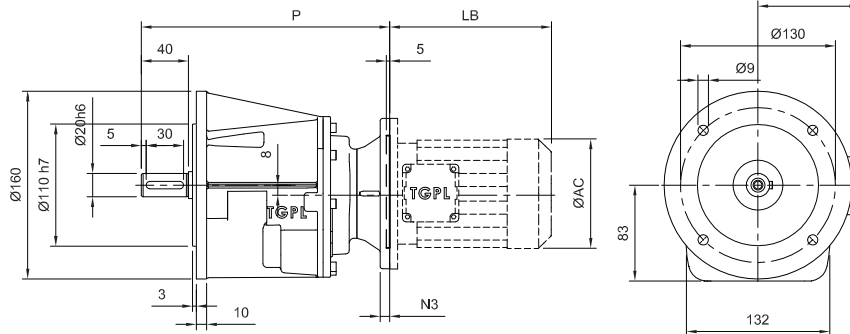
14. OUT LINE DIMENSIONS

TH20 - - - IEC

F



FL



Motor Type	IEC	M	M1	M2	CL	N	N1	N2	N3	N4	P	Kg		TM	TM - DCB					
												LB	AC		AD	LB	AC	AD		
TH20-2	F63	11	12.8	4	23.7	140	115	95	10	9	234	10.5	11.2	TM63	184	120	98	247	120	100
TH20-2	F71	14	16.3	5	26.7	160	130	110	10	9	237	10.7	11.4	TM71	200	139	109	258	140	112
TH20-2	F80	19	21.8	6	36.7	200	165	130	12	12	247	10.9	11.6	TM80	224	156	131	290	156	133
TH20-2	F90S	24	27.3	8	36.7	200	165	130	12	12	247	11.0	11.7	TM90S	242	172	136	315	172	136
TH20-2	F90L	24	27.3	8	36.7	200	165	130	12	12	247	11.0	11.7	TM90L	265	172	136	336	172	136
Motor Type	IEC	M	M1	M2	CL	N	N1	N2	N3	N4	P	Kg		TM	TM - DCB					
TH20-3	F63	11	12.8	4	23.7	140	115	95	10	9	248	11.2	11.9	TM63	184	120	98	247	120	100
TH20-3	F71	14	16.3	5	26.7	160	130	110	10	9	251	11.4	12.0	TM71	200	139	109	258	140	112