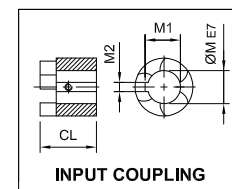
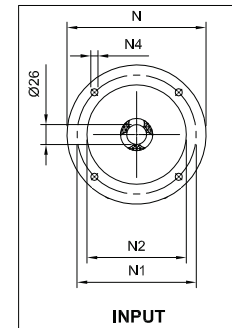
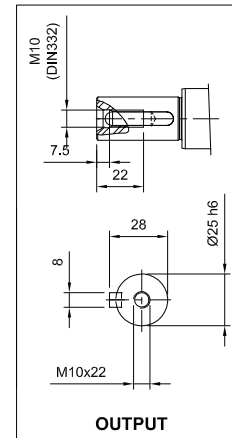
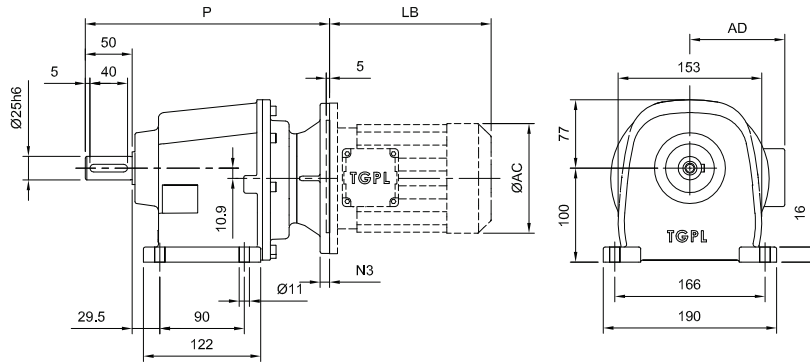
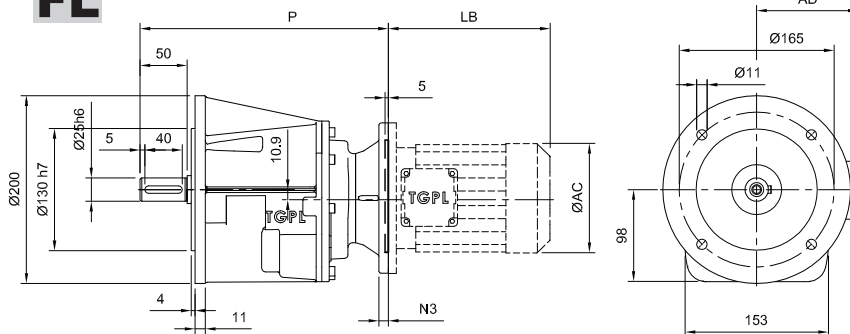


TH25 - - - IEC

F



FL



Motor Type	IEC	M	M1	M2	CL	N	N1	N2	N3	N4	P	kg		Motor Type	TM			TM - DCB		
												LB	AC		AD	LB	AC	AD		
TH25-2	F63	11	12.8	4	23.7	140	115	95	10	9	257	14.2	15.7	TM63	184	120	98	247	120	100
TH25-2	F71	14	16.3	5	26.7	160	130	110	10	9	260	14.3	15.8	TM71	200	139	109	258	140	112
TH25-2	F80	19	21.8	6	36.7	200	165	130	12	12	270	14.5	16.0	TM80	224	156	131	290	156	133
TH25-2	F90S	24	27.3	8	36.7	200	165	130	12	12	270	14.6	16.1	TM90S	224	172	136	315	172	136
TH25-2	F90L	24	27.3	8	36.7	200	165	130	12	12	270	14.6	16.1	TM90L	265	172	136	336	172	136
TH25-3	F63	11	12.8	4	23.7	140	115	95	10	9	274	15.5	17.1	TM63	184	120	98	247	120	100
TH25-3	F71	14	16.3	5	26.7	160	130	110	10	9	277	15.6	17.2	TM71	200	139	109	258	140	112
TH25-3	F80	19	21.8	6	36.7	200	165	130	12	12	287	15.8	17.4	TM80	224	156	131	290	156	133