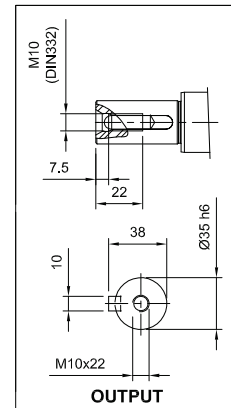
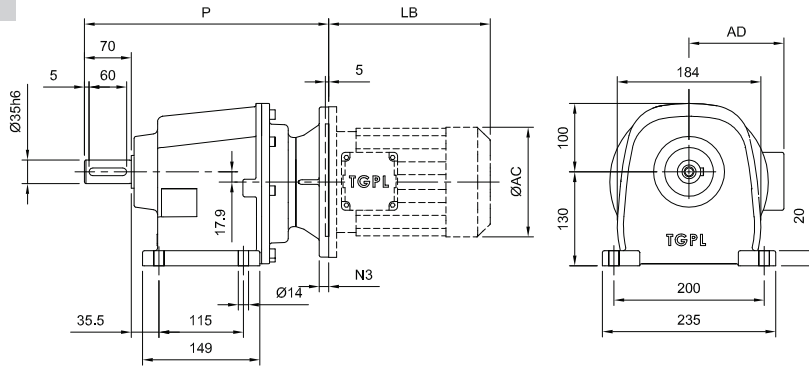
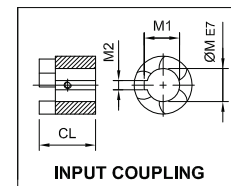
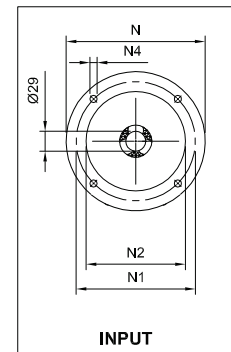
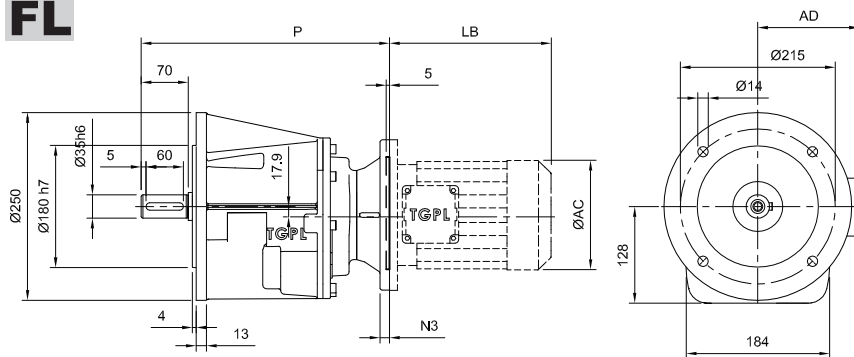


TH35 - - - IEC

F



FL



Motor Type	IEC	M	M1	M2	CL	N	N1	N2	N3	N4	P	Kg		Motor Type	TM			TM - DCB		
												TM	TM		TM	TM	TM	TM		
TH35-2	F71	14	16.3	5	26.7	160	130	110	10	9	325	26.7	29.2	TM71	200	139	109	258	140	112
TH35-2	F80	19	21.8	6	36.7	200	165	130	12	12	335	26.9	29.5	TM80	224	156	131	290	156	133
TH35-2	F90S	24	27.3	8	36.7	200	165	130	12	12	335	27.1	29.6	TM90S	242	172	136	315	172	136
TH35-2	F90L	24	27.3	8	36.7	200	165	130	12	12	335	27.1	29.6	TM90L	265	172	136	336	172	136
TH35-2	F100	28	31.3	8	43.7	250	215	180	14	15	343	27.8	29.8	TM100	297	196	145	387	198	146
TH35-2	F112	28	31.3	8	43.7	250	215	180	14	15	343	27.8	29.8	TM112	316	216	154	395	217	156
Motor Type	IEC	M	M1	M2	CL	N	N1	N2	N3	N4	P	Kg		Motor Type	TM			TM - DCB		
TH35-3	F71	14	16.3	5	26.7	160	130	110	10	9	334	27.7	30.2	TM71	200	139	109	258	140	112
TH35-3	F80	19	21.8	6	36.7	200	165	130	12	12	344	28.0	30.5	TM80	224	156	131	290	156	133
TH35-3	F90S	24	27.3	8	36.7	200	165	130	12	12	344	28.1	30.6	TM90S	242	172	136	305	172	136
TH35-3	F90L	24	27.3	8	36.7	200	165	130	12	12	344	28.1	30.6	TM90L	265	172	136	336	172	136