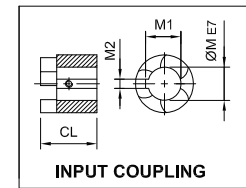
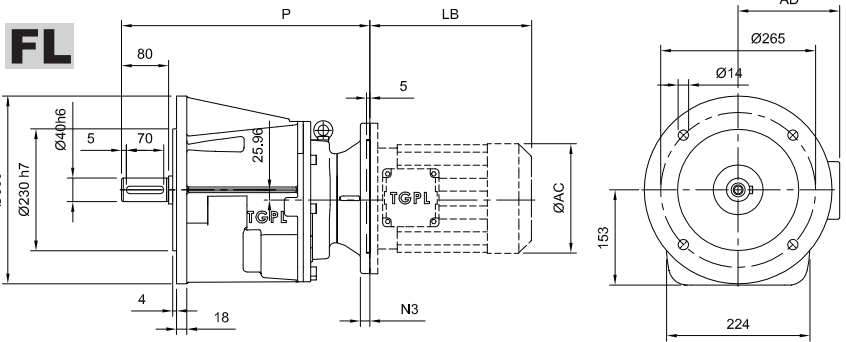
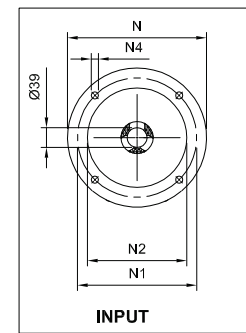
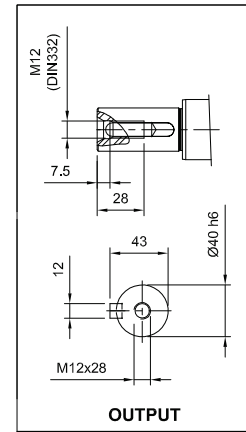
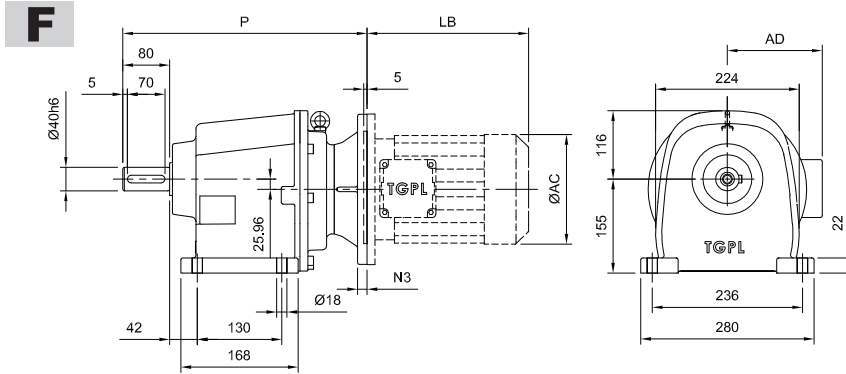


**TH40 - - - IEC**



Motor Type	IEC	M	M1	M2	CL	N	N1	N2	N3	N4	P	kg		TM	TM			TM - DCB		
												LB	AC		AD	LB	AC	AD		
TH40-2	F80	19	21.8	6	42.2	200	165	130	12	12	391	47.4	49.5	TM80	224	156	131	290	156	133
TH40-2	F90S	24	27.3	8	42.2	200	165	130	12	12	391	47.5	49.7	TM90S	242	172	136	315	172	136
TH40-2	F90L	24	27.3	8	42.2	200	165	130	12	12	391	47.5	49.7	TM90L	265	172	136	336	172	136
TH40-2	F100	28	31.3	8	49.2	250	215	180	14	15	398	48.7	50.6	TM100	297	196	145	387	198	146
TH40-2	F112	28	31.3	8	49.2	250	215	180	14	15	398	48.7	50.6	TM112	316	216	154	395	217	156
TH40-2	F132	38	41.3	10	61.2	300	265	230	16	15	410	50.1	52.7	TM132						
Motor Type	IEC	M	M1	M2	CL	N	N1	N2	N3	N4	P	kg		TM	TM			TM - DCB		
												LB	AC		AD	LB	AC	AD		
TH40-3	F71	14	16.3	5	26.7	160	130	110	10	9	375	45.8	48.6	TM71	200	139	109	258	140	112
TH40-3	F80	19	21.8	6	36.7	200	165	130	12	12	385	45.9	48.7	TM80	224	156	131	290	156	133
TH40-3	F90S	24	27.3	8	36.7	200	165	130	12	12	385	46.0	48.8	TM90S	242	172	136	315	172	136
TH40-3	F90L	24	27.3	8	36.7	200	165	130	12	12	385	46.0	48.8	TM90L	265	172	136	336	172	136
TH40-3	F100	28	31.3	8	43.7	250	215	180	14	15	392	45.0	47.7	TM100	297	196	145	387	198	146