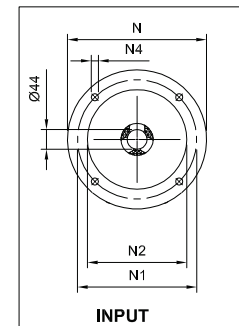
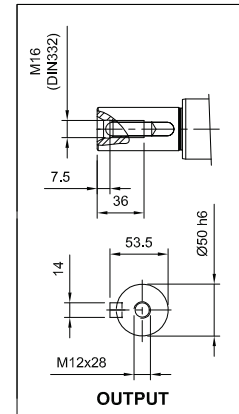
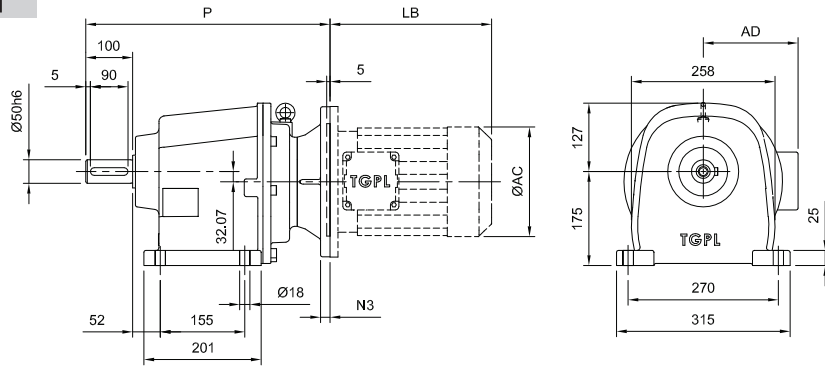
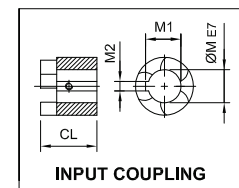
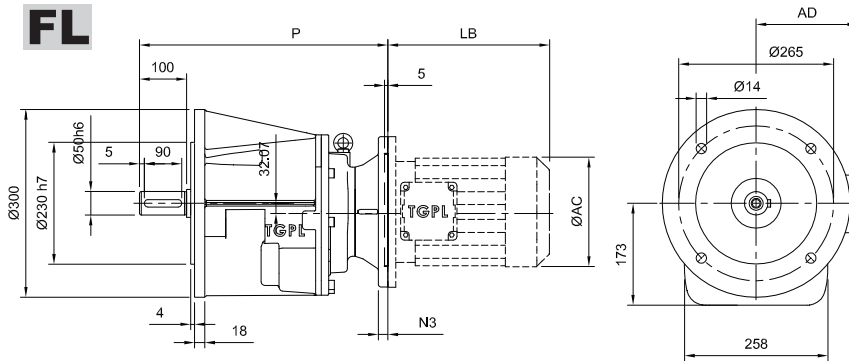


TH50 - - - IEC

F



FL



Motor Type	IEC	M	M1	M2	CL	N	N1	N2	N3	N4	P	Kg		Motor Type	TM			TM - DCB		
												LB	AC		AD	LB	AC	AD		
TH50-2	F90S	24	27.3	8	48.7	200	165	130	12	12	462	71.3	74.1	TM90S	242	172	136	315	172	136
TH50-2	F90L	24	27.3	8	48.7	200	165	130	12	12	462	71.3	74.1	TM90L	265	172	136	336	172	136
TH50-2	F100	28	31.3	8	52.7	250	215	180	14	15	466	73.2	76.0	TM100	297	196	145	387	198	146
TH50-2	F112	28	31.3	8	52.7	250	215	180	14	15	466	73.2	76.0	TM112	316	216	154	395	217	156
TH50-2	F132	38	41.3	10	62.7	300	265	230	16	15	476	76.0	78.9	TM132						
TH50-2	F160	42	45.3	12	70.2	350	300	250	20	19	484	80.3	83.1	TM160						
Motor Type	IEC	M	M1	M2	CL	N	N1	N2	N3	N4	P	Kg		Motor Type	TM			TM - DCB		
TH50-3	F80	19	21.8	6	42.2	200	165	130	12	12	475	73.2	76.0	TM80	224	156	131	290	156	133
TH50-3	F90S	24	27.3	8	42.2	200	165	130	12	12	475	73.2	76.0	TM90S	242	172	136	315	172	136
TH50-3	F90L	24	27.3	8	42.2	200	165	130	12	12	475	73.2	76.0	TM90L	265	172	136	336	172	136
TH50-3	F100	28	31.3	8	49.2	250	215	180	14	15	482	75.8	78.6	TM100	297	196	145	387	198	146
TH50-3	F112	28	31.3	8	49.2	250	215	180	14	15	482	75.8	78.6	TM112	316	216	154	395	217	156
TH50-3	F132	38	41.3	10	61.2	300	265	230	16	15	494	78.6	81.4	TM132						