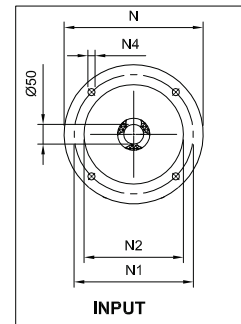
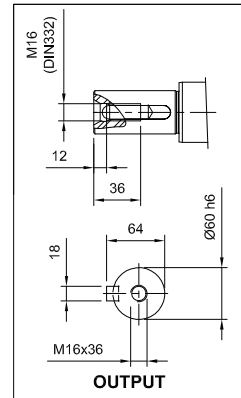
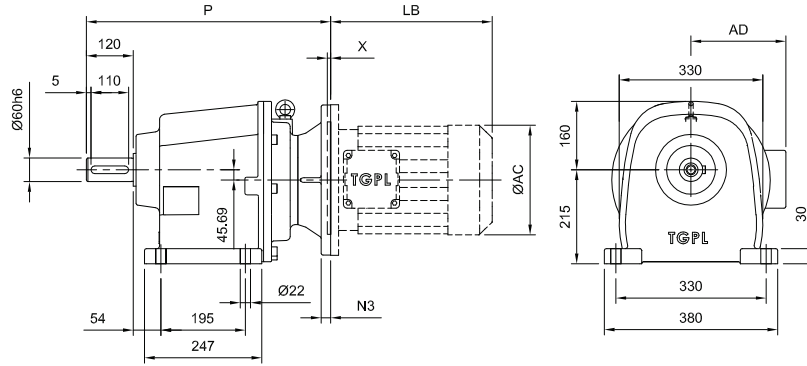
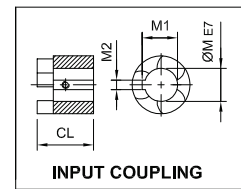
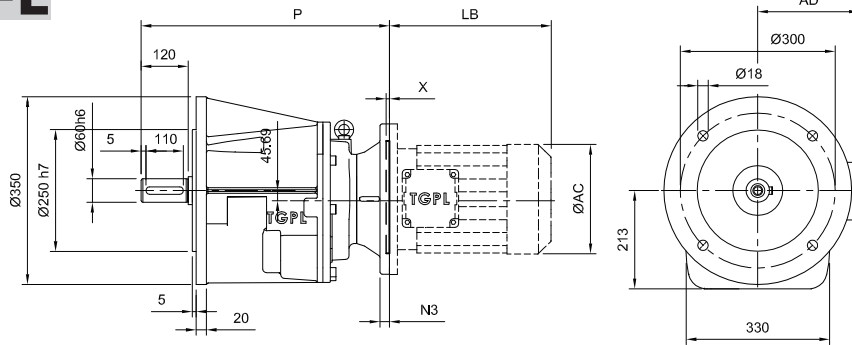


**TH60 - - - IEC**

**F**



**FL**



Motor Type	IEC	M	M1	M2	CL	N	N1	N2	N3	N4	P	X	Kg	Motor Type	TM			TM - DCB			
															LB	AC	AD	LB	AC	AD	
TH60-2	F100	28	31.3	8	52.7	250	215	180	14	15	535	5	122.1	122.5	TM100	297	196	145	387	198	146
TH60-2	F112	28	31.3	8	52.7	250	215	180	14	15	535	5	122.1	122.5	TM112	316	216	154	395	217	156
TH60-2	F132	38	41.3	10	62.7	300	265	230	16	15	545	5	122.6	122.6	TM132						
TH60-2	F160	42	45.3	12	70.2	350	300	250	20	19	553	5	126.4	126.4	TM160						
TH60-2	F180	48	51.8	14	70.2	350	300	250	20	19	553	6	126.4	126.4	TM180						
TH60-3	F90S	24	27.3	8	48.7	200	165	130	12	12	552	5	115.9	115.9	TM90S	242	172	136	315	172	136
TH60-3	F90L	24	27.3	8	48.7	200	165	130	12	12	552	5	115.9	115.9	TM90L	265	172	136	336	172	136
TH60-3	F100	28	31.3	8	52.7	250	215	180	14	15	556	5	117.8	117.8	TM100	297	196	145	387	198	146
TH60-3	F112	28	31.3	8	52.7	250	215	180	14	15	556	5	117.8	117.8	TM112	316	216	154	395	217	156
TH60-3	F132	38	41.3	10	62.7	300	265	230	16	15	566	5	122.6	122.6	TM132						
TH60-3	F160	42	45.3	12	70.2	350	300	250	20	19	574	5	126.4	126.4	TM160						