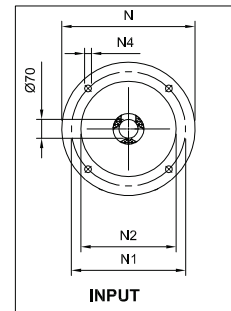
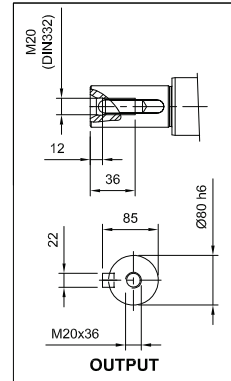
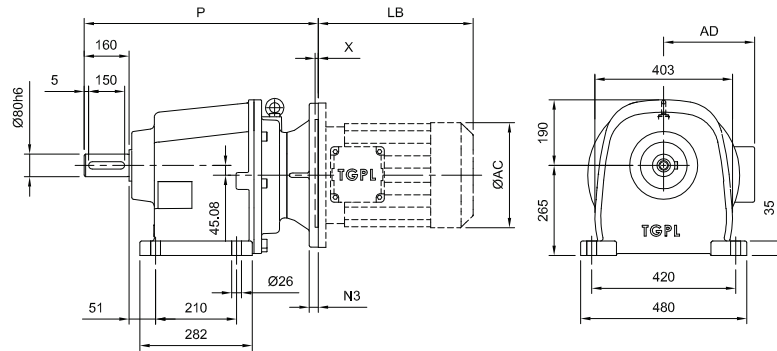
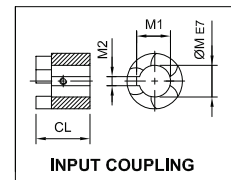
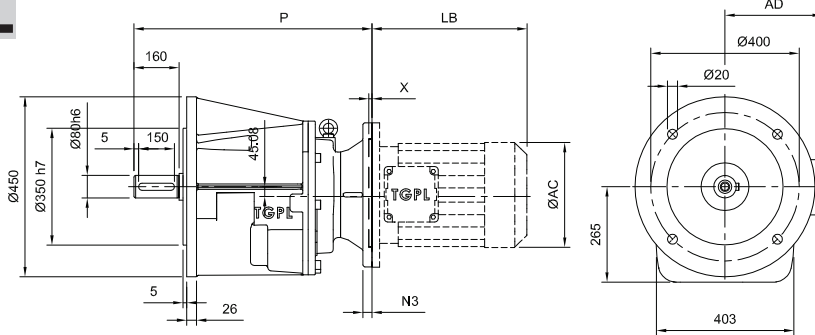


TH80 - - - IEC

F



FL



Motor Type	IEC	M	M1	M2	CL	N	N1	N2	N3	N4	P	X	Kg	IP	TM			TM - DCB			
															LB	AC	AD	LB	AC	AD	
TH80-2	F160	42	45.3	12	72.2	350	300	250	20	19	634	6	172.9	180.5							
TH80-2	F180	48	51.8	14	72.2	350	300	250	20	19	634	6	172.9	180.5							
TH80-2	F200	55	59.3	16	79.2	400	350	300	20	19	641	6	176.7	184.3							
TH80-2	F225	60	64.4	18	81.2	450	400	350	22	19	643	6	181.5	189.1							
Motor Type	IEC	M	M1	M2	CL	N	N1	N2	N3	N4	P	X	Kg	IP	TM			TM - DCB			
TH80-3	F100	28	31.3	8	52.7	250	215	180	14	15	640	5	175.8	183.4	TM100	297	196	145	387	198	146
TH80-3	F112	28	31.3	8	52.7	250	215	180	14	15	640	5	175.8	183.4	TM112	316	216	154	395	217	156
TH80-3	F132	38	41.3	10	62.7	300	265	230	16	15	650	5	178.6	186.2							
TH80-3	F160	42	45.3	12	70.2	350	300	250	20	19	658	6	181.5	189.1							
TH80-3	F180	48	51.8	14	70.2	350	350	300	20	19	658	6	181.5	189.1							